

# FSNYE

FOOTWEAR SHOW NEW YORK EXPO

WHERE WE PUT **YOUR** BEST FOOT FORWARD

## SHOW DIRECTORY

**JUNE 7-9, 2022**  
**TUESDAY-THURSDAY**

**PARK LANE NEW YORK**  
36 Central Park South  
New York City



*Held during*

**FFANY**  
**MARKET WEEK** 

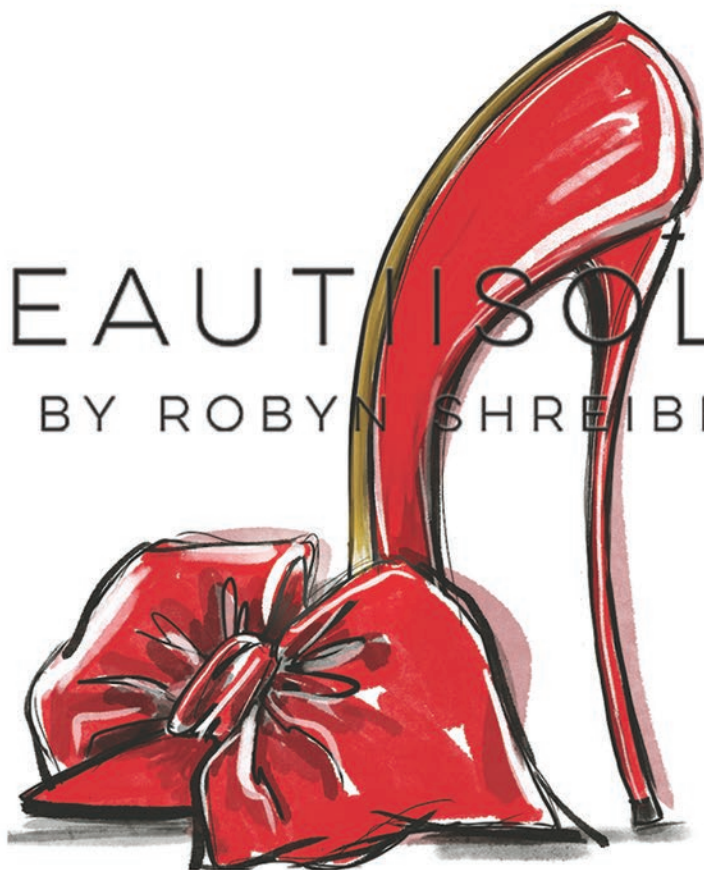
FSNYE.COM | 917.828.7092 | PREIN@FSNYE.COM



@FSNYE

# BEAUTIISOLES

BY ROBYN SHREIBER



---

SPRING 2023 FOOTWEAR COLLECTION  
JUNE 7TH-9TH, 2022  
FSNYE/FFANY

PARK LANE HOTEL, ROOM #4004  
36 CENTRAL PARK SOUTH, NEW YORK, NY 10019

TO SCHEDULE APPOINTMENTS PLEASE CONTACT:  
LYN FLEMING LYNF@BEAUTIISOLES.COM - 805.625.1610  
LINDA PETTINATO LINDA@BEAUTIISOLES.COM - 516.455.8609



@BEAUTIISOLES

WWW.BEAUTIISOLES.COM



June 7, 2022

Dear Retailers and Exhibitors,

I am pleased to welcome you to the June 2022 Footwear Show New York Expo held during FFANY Market Week. Thank you so much for your support and participation as we return to our now second, live, in-person shoe show. We hope you enjoy the iconic Park Lane New York, with its newly redesigned interior, legendary breathtaking Central Park views, and exquisite culinary offerings.

We put **your** best foot forward at Footwear Show NY Expo, where shoes are the main event. After many months of isolation and Zoom calls, it is wonderful to reconnect and socialize again, in person, with so many industry friends, retailers, and exhibitors.

We are delighted to present the top fashion brands highlighting the upcoming collections and trends, showcasing the latest designs for the Spring/Summer 2023 collections. Shop the show on the 40<sup>th</sup>, 41<sup>st</sup> and 42<sup>nd</sup> floors. Showcasing numerous new brands, exciting fresh collections, and elements of sustainability that's a must-see! Start your day on the right foot, with a cup of joe, daily morning coffee, sponsored by National Shoe Travelers (NST) on the 40<sup>th</sup> and 41<sup>st</sup> floors from 9–11am.

Don't forget to mark the dates and register for the next in-person hotel show which will take place Tuesday through Thursday, November 29–December 1, 2022. New York will be bustling this holiday season, so we encourage you to make your plans well in advance by reserving exhibit space and accommodations as soon as possible. I gladly welcome your suggestions and value your feedback, so please feel free to share at [prein@fsnye.com](mailto:prein@fsnye.com).

Our mission is to support and enhance your excitement and experience of the show. As a footwear industry veteran of 30 years, with the Fashion Footwear Association of New York, I will continue the good work and efforts by making it easy to do business in New York City.

We wish the new brands and companies exhibiting at this show, as well as all others, success in establishing connections with our visiting retailers.

Don't forget to make your appointments and visit the New York Showrooms as they are open all week.

I look forward to seeing you this week and extend my best wishes to all for a successful show.

Phyllis Rein  
President



**C H I E   M I H A R A**

**New Spring '23 Collection**

**June 7th – June 9th**  
Room 4007- 40th floor  
Park Lane New York Hotel  
36 Central Park South

For appointments, please email [business@chiemihara.com](mailto:business@chiemihara.com)  
[www.chiemihara.com](http://www.chiemihara.com)



PARKLANE Hotel  
Room #4114, 41st floor

Gene Berkowitz – President  
gene.berkowitz@purrfectventures.com /  
818.395.6889

Julie Estes – Sales Account Executive  
julie.estes@purrfectventures.com / 205.401.0961  
Purrfect Ventures, LLC  
www.katyperrycollections.com



*@katyperrycollections*

KATY  PERRY

## SHOW INFORMATION

### PARK LANE NEW YORK

36 Central Park South  
(59<sup>th</sup> Street between 5<sup>th</sup> & 6<sup>th</sup> Aves)  
New York, NY 10019  
Tel: 212.371.4000

### SHOW HOURS

TUESDAY 7 <sup>TH</sup>	9 AM–6 PM
WEDNESDAY 8 <sup>TH</sup>	9 AM–6 PM
THURSDAY 9 <sup>TH</sup>	9 AM–4 PM

### REGISTRATION

40<sup>TH</sup> FLOOR

### UPCOMING SHOWS

NOVEMBER 29–DECEMBER 1, 2022  
JUNE 6–8, 2023  
NOVEMBER 28–30, 2023  
ALL TUESDAY–THURSDAY

### CONTENTS

SHOW & HOTEL INFORMATION .....Page 4  
FIRST-TIME EXHIBITORS.....Page 7  
EXHIBITING COMPANIES .....Page 9  
FLOOR PLANS .....Page 18  
EXHIBITING BRANDS.....Page 22  
ADDENDUM

---

### FOOTWEAR SHOW NEW YORK EXPO

fsnye.com  
Produced by Phyllis Rein  
prein@fsnye.com  
917.828.7092

DESIGN & PRODUCTION



| www.alouettecommunications.com | 917.376.5398

## INFORMATION

### PARK LANE NEW YORK

36 Central Park South  
(59<sup>th</sup> Street between 5<sup>th</sup> & 6<sup>th</sup> Aves)  
New York, NY 10019  
Tel: 212.371.4000



### AMENITIES

#### HARRY'S NEW YORK BAR

Inspired by iconic New York City culture, Harry's New York Bar reimagines city traditions with a millennial, contemporary flair. Decadent burgers and seafood-inspired dishes including caviar are paired with unique and rare Champagne and specialty martinis. Harry's New York Bar is open for breakfast, lunch, and dinner daily.



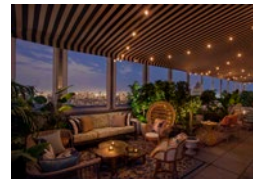
#### ROSE LANE

This Parisian art nouveau-inspired bar transforms effortlessly throughout the day. Enjoy a quick breakfast and coffee on the go, to an afterwork cocktail, to a nightcap. Evening menu highlights include homemade woodfire pizzas and blistered shishito peppers.



#### DARLING

Darling is a chic new rooftop bar and lounge offering panoramic views of the Manhattan skyline and Central Park. Located on the 47th floor of the hotel, this intimate and whimsical gathering space features an elevated cocktail menu and a selection of thoughtfully curated programming.



#### DINE AWAY

Marvel in room with our culinary delights.

#### WELLNESS AND FITNESS

The wellness and fitness center is located on the 5<sup>th</sup> floor and offers 24/7 access via guest room key.



#### VALET PARKING

The hotel offers valet parking for an additional fee.



The designs, the deals and  
the drops that define the  
nonstop world of footwear.

**Every day, feet first.**

## EVENTS COMING UP

**June 28** WWD Metaverse Symposium / Paris

**June 30** FMG Tech Forum / Virtual

**August 3** Footwear News CEO Summit / NYC

**September 29** FMG Women In Power / NYC

**November 30** Footwear News Achievement Awards / NYC

**For more information contact:**

SAMANTHA RUMSKY

Advertising Director, **Footwear News**  
Footwear Director, **Fairchild Media Group**  
[srumsky@fairchildfashion.com](mailto:srumsky@fairchildfashion.com)





## WELCOME FIRST-TIME EXHIBITORS

Footwear Show NY Expo  
is pleased to welcome  
these first-time exhibiting brands and companies.

**AÉROPOSTALE A**  
41<sup>ST</sup> FLOOR 4116

**AMADA MADE BY HAND  
LLC W**  
40<sup>TH</sup> FLOOR 4006

**ANNA CAPRI W**  
41<sup>ST</sup> FLOOR 4100, 4112

**ASH WM**  
41<sup>ST</sup> FLOOR 4110

**AUBERGINE WA**  
41<sup>ST</sup> FLOOR 4108

**BABY PHAT W**  
41<sup>ST</sup> FLOOR 4116

**BAG PRO A**  
41<sup>ST</sup> FLOOR 4102

**BALLET FLATS  
BY AMADA W**  
40<sup>TH</sup> FLOOR 4006

**BETTY BOOP W**  
41<sup>ST</sup> FLOOR 4116

**BEVERLY HILLS POLO  
CLUB W**  
41<sup>ST</sup> FLOOR 4116

**BUSINESS IN MOTION  
INC A**  
41<sup>ST</sup> FLOOR 4102

**CARMEL BY D3SIGN WA**  
41<sup>ST</sup> FLOOR 4108

**FROGG TOGGS WMCA**  
42<sup>ND</sup> FLOOR 4201

**GLAMOURS Y WA**  
42<sup>ND</sup> FLOOR 4203

**HIGHLINE UNITED LLC WM**  
41<sup>ST</sup> FLOOR 4110, 4115

**HONGPENG WMA**  
40<sup>TH</sup> FLOOR 4010

**ISAAC MIZRAHI A**  
41<sup>ST</sup> FLOOR 4116

**ITALIAN SHOEMAKERS W**  
41<sup>ST</sup> FLOOR 4100, 4112

**JUST 4 FUN WCA**  
41<sup>ST</sup> FLOOR 4108

**KATY PERRY  
FOOTWEAR W**  
41<sup>ST</sup> FLOOR 4114

**KELSI DAGGER  
BROOKLYN W**  
**NEW YORK SHOWROOM**  
*Call for appointment*  
214.537.4247  
510.862.2503

**MIA W**  
**NEW YORK SHOWROOM**  
*Call for appointment*  
917.572.3244  
305.455.2600

**PROPÉT WM**  
42<sup>ND</sup> FLOOR 4200

**ROCKET DOG W**  
**NEW YORK SHOWROOM**  
*Call for appointment*  
214.537.4247  
510.862.2503

**SANCTUARY WM**  
41<sup>ST</sup> FLOOR 4115

**SASHA WM**  
41<sup>ST</sup> FLOOR 4116

**SASHA HANDBAGS WA**  
41<sup>ST</sup> FLOOR 4116

**TOSCANELLA W**  
41<sup>ST</sup> FLOOR 4100, 4112

**UPCYCLE FOOTWEAR WM**  
41<sup>ST</sup> FLOOR 4103

**WINCHESTER WMCA**  
42<sup>ND</sup> FLOOR 4201

# SHOE BAG GARMENT BAGS TRAYS PRO RACK

---



EQUIPMENT FOR SALESFORCE  
**Our French design for your American success.**

**Room 4102 | 41st Floor**



Business In Motion Inc.  
12081 Katy Rd. Suite 809  
FORT WORTH, TX 76244  
Office: (682) 319-7525

**[www.bagpro.us](http://www.bagpro.us)**

## EXHIBITING COMPANIES

### W

#### **AICIBERLUCCI INC**

3 VALLEY ROAD  
LOCUST VALLEY, NY 11560  
617.888.0459 | 631.871.2335  
aiciberluccishoes@gmail.com  
www.aiciberluccishoes.com  
AICIBERLUCCI W  
**40<sup>TH</sup> FLOOR 4002**  
DIRECTORY AD

### WA

#### **ALL BLACK**

MJ ROSE ASSOCIATES  
523 EAST PUTNAM AVENUE, SUITE 4  
GREENWICH, CT 06830  
203.344.9220  
marty@allblackfootwear.com  
www.allblackfootwear.com  
ALL BLACK W  
ALL BLACK HANDBAGS A  
www.allblackfootwear.com  
ALL BLACK ITALIA W  
www.allblackfootwear.com  
**Special Sizes**  
W: -5  
**40<sup>TH</sup> FLOOR 4012**

### W

#### **AMADA MADE BY HAND LLC**

2816 S KNIGHTSBRIDGE CIRCLE  
ANN ARBOR, MI 48105  
786.224.1735  
llan@balletflatsbyamada.com  
www.balletflatsbyamada.com  
BALLET FLATS BY AMADA W  
**Special Sizes**  
W: Narrow, 12+, -5  
**40<sup>TH</sup> FLOOR 4006**

### WM

#### **ASH / HIGHLINE UNITED LLC**

990 WASHINGTON STREET  
SUITE 215  
DEDHAM, MA 02026  
631.664.2828  
sarah@highlineunited.us  
www.highlineunited.com  
ASH WM  
www.ash.com  
**41<sup>ST</sup> FLOOR 4110**  
DIRECTORY AD

### WA

#### **AUBERGINE / CARMEL BY D3SIGN LLC**

3408 WINCHESTER DRIVE  
GREENSBORO, NC 27406  
919.672.0156  
CarmelbyD3sign@  
AubergineLuxe.com  
www.aubergineluxe.com  
AUBERGINE WA  
www.aubergineluxe.com  
CARMEL BY D3SIGN W  
JUST 4 FUN W C A  
www.just4funfashion.com  
**Special Sizes**  
W: 12+, Wide  
**41<sup>ST</sup> FLOOR 4108**

### W

#### **BEAUTIISOLES BY ROBYN SHREIBER**

4012 DAVANA ROAD  
SHERMAN OAKS, CA 91423  
818.681.9238  
lynf@beautiisoles.com  
www.beautiisoles.com  
BEAUTIISOLES  
BY ROBYN SHREIBER W  
**Special Sizes**  
W: Wide  
**40<sup>TH</sup> FLOOR 4004**  
DIRECTORY AD

### A

#### **BUSINESS IN MOTION INC**

12081 KATY ROAD, SUITE 809  
FORT WORTH, TX 76244  
682.319.7525  
t.taylor@bagpro.us  
www.bagpro.us  
BAG PRO A  
**41<sup>ST</sup> FLOOR 4102**  
DIRECTORY AD

### W

#### **COUGAR SHOES**

2 MASONRY COURT  
BURLINGTON, ON L7T 4A8  
Canada  
905.639.0100  
info@cougarshoes.com  
brendons@cougarshoes.com  
us.cougarshoes.com  
COUGAR W  
STORM BY COUGAR W  
us.cougarshoes.com  
**Special Sizes**  
W: Wide  
**40<sup>TH</sup> FLOOR 4008, 4009**

### **ECX GLOBAL LOGISTICS**

20 EAST SUNRISE HIGHWAY,  
SUITE 305  
Valley Stream, NY 11581  
718.978.0808  
etozzi@eurocargo.com  
www.eurocargo.com  
DIRECTORY AD

## EXHIBITING COMPANIES

### WMA

#### FALC SPA

CONTRADA SAN DOMENICO,  
24 CIVITANOVA MARCHE MC,  
610122, ITALY  
+39 0733 79091  
info@falc.biz  
rob@falcusa.com  
www.falc.biz  
CANDICE COOPER W M  
www.candicecooper.com  
FLOWER MOUNTAIN W M  
www.flowermountain.com  
VOILE BLANCHE W M  
www.voileblanche.com  
W6YZ WM  
www.W6YZ.com  
**40TH FLOOR 4014**

#### FOOTWEAR NEWS

475 FIFTH AVENUE, 3RD FLOOR  
NEW YORK, NY 10017  
212.256.8118  
srumsky@fairchildfashion.com  
www.footwearnews.com  
DIRECTORY AD

### W

#### FRENCH SOLE

985 LEXINGTON AVENUE  
NEW YORK, NY 10021  
212.737.2865  
luxfootwear@aol.com  
www.frenchsoleshoes.com  
FRENCH SOLE W  
www.frenchsoleshoes.com  
NICKY HILTON X FRENCH  
SOLE W  
www.nickyhilton.com  
**Special Sizes**  
W: 12+, -5  
**40TH FLOOR 4001**

### WMCA

#### FROGG TOGGS

131 SUNDOWN DRIVE NW  
Arab, AL 35016  
201.970.0953  
256.931.1580  
bob.hollenberg@froggtoggs.  
com  
www.froggtoggs.com  
FROGG TOGGS W M C A  
WINCHESTER W M C  
**42ND FLOOR 4201**

### WA

#### GLAMOURSRY

UL. PRYMASA AUGUSTA HIONDA,  
10H/174  
WARSAWA/02-972  
POLAND  
+48 507 165 078  
kontakt@glamoursry.pl  
www.glamoursry.pl/en/  
GLAMOURSRY W A  
www.glamoursry.pl/en  
**42ND FLOOR 4203**

### WM

#### GREDALE LLC

1735 SOUTH SANTA FE AVENUE  
LOS ANGELES, CA 90021  
323.210.3951  
nicole@gredale.com  
www.gredale.com  
AMERICAN RAG W  
www.americanrag.com  
ARTICLES OF SOCIETY W  
www.articlesofsociety.com  
SEVEN 7 FOOTWEAR W  
www.seven7footwear.com  
UPCYCLE FOOTWEAR W M  
www.upcyclela.com  
**41ST FLOOR 4103**

### WMA

#### HONGPENG

4806 NE 25TH AVENUE  
PORTLAND, OR 97211  
503.490.2604  
andrewb@hongpeng0769.com  
HONGPENG W M A  
**40TH FLOOR 4010**

### W

#### ITALIAN SHOEMAKERS INC

9350 NORTH WEST 58TH STREET  
DORAL, FL 33178  
305.477.9206  
support@italianshoemakers.  
com  
oliver@italianshoemakers.com  
www.italianshoemakers.com  
ANNA CAPRI W  
ITALIAN SHOEMAKERS W  
TOSCANELLA W  
**Special Sizes**  
W: Narrow, Wide  
**41ST FLOOR 4100, 4112**

### M

#### JOHNSTON & MURPHY

1415 MURFREESBORO ROAD  
NASHVILLE, TN 37217  
615.367.7430  
dmoore@genesco.com  
www.johnstonmurphy.com  
JOHNSTON & MURPHY M  
JOHNSTON & MURPHY  
COLLECTION M  
www.johnstonmurphy.com/  
collection  
**Special Sizes**  
M: Narrow, 14+, Wide  
**42ND FLOOR 4204**



# MIA

WE ARE EXCITED TO ANNOUNCE THE OPENING OF OUR  
**NEW SHOWROOM**  
IN NEW YORK CITY

Located at  
44 W 55th St, 3rd Floor  
New York, NY 10019



Showroom Contact:  
**Alison Nagel**  
anagel@miashoes.com  
917-572-3244  
305-455-2600

## EXHIBITING COMPANIES

### W

#### **JON JOSEF / P & M FOOTWEAR LLC**

1187 SMITH AVENUE  
BIRMINGHAM, MI 48009  
248.910.0904  
jj@jonjosef.com  
www.jonjosef.com

JON JOSEF W

#### **Special Sizes**

W: Narrow, Wide

**40<sup>TH</sup> FLOOR 4016**

### WM

#### **KANNER CORPORATION**

846 WEST VERDULERA STREET,  
SUITE 101

CAMARILLO, CA 93010

805.375.0038

207.650.9612

sirwin@kanner.com

patty\_weber@me.com

GABOR W M

www.gabor.de

HALFINGER W M

www.Haflinger.de

THINK! W M

www.thinkshoesusa.com

#### **Special Sizes**

M: Wide

**40<sup>TH</sup> FLOOR 4000**

DIRECTORY AD

### W

#### **KATY PERRY FOOTWEAR**

15821 VENTURA BOULEVARD,  
SUITE 730

ENCINO, CA 91436

818.817.7448

gene.berkowitz@

purrfectventures.com

www.purrfectventures.com

KATY PERRY FOOTWEAR W

www.katyperrycollections.com

**41<sup>ST</sup> FLOOR 4114**

DIRECTORY AD

### W

#### **KELSI DAGGER BROOKLYN**

TOP PICK GLOBAL INC

50 WEST 57<sup>TH</sup> STREET, 8<sup>TH</sup> FLOOR

(BETWEEN 5<sup>TH</sup> & 6<sup>TH</sup> AVES)

NEW YORK, NY 10019

NEW YORK SHOWROOM

Call for appointment

214.537.4247

510.862.2503

DIRECTORY AD

### W

#### **LAUREN LORRAINE**

7036 JUDI STREET

Dallas, TX 75252

917.280.1927

972.679.0386

av@laurenlorraine.com

Irene@laurenlorraine.com

www.laurenlorraine.com

LAUREN LORRAINE W

#### **Special Sizes**

W: -6

**40<sup>TH</sup> FLOOR 4015**

### W

#### **MIA SHOES, INC**

44 WEST 55<sup>TH</sup> STREET, 3<sup>RD</sup> FLOOR

NEW YORK, NY 10019

917.572.3244

305.455.2600

anagel@miashoes.com

www.miashoes.com

MIA SHOES W

NEW YORK SHOWROOM

Call for appointment

DIRECTORY AD

### WMCA

#### **MINNETONKA**

1113 EAST HENNEPIN AVENUE

MINNEAPOLIS, MN 55414

612.331.8493

whoelsale@minnetonkamocc.

com

Toni.Nvtonkamocc.com

www.minnetonkamoccasin.com

MINNETONKA W M C A

#### **Special Sizes**

M: Wide

W: Wide

**42<sup>ND</sup> FLOOR 4212**

#### **NATIONAL SHOE TRAVELERS (NST)**

4931 SW 76<sup>TH</sup> AVENUE, #344

PORTLAND, OR 97225

503.781.1096

terry.bastis@comcast.net

www.mynst.org

DIRECTORY AD

### C

#### **OOMPHIES**

4238 GREEN RIVER ROAD

CORONA, CA 92880

951.549.3610

Jerrybreig@amosheepskin.

com

www.lamofootwear.com

OOMPHIES C

www.oomphies.net

**41<sup>ST</sup> FLOOR 4101**

### WM

#### **PONTO FOOTWEAR**

2106 MEADOWGREEN COURT

ENCINITAS, CA 92024

760.271.5506

henrik@pontofootwear.com

www.pontofootwear.com

DIRECTORY AD

**Propét**

DUROCLOUD™

**B10**



**BIODEGRADABLE DUROCLOUD™ SOLE  
WITH BAMBOO COTTON UPPER**

**FSNYE JUNE 7<sup>TH</sup>–9<sup>TH</sup> SUITE #4200 PARK LANE HOTEL**

# Your business is served.



curinaadv.it

We are a Global Logistics Solutions Provider specialized in the Footwear Industry.  
As an integrated supply chain partner we plan, control and implement effective systems to offer:

- P.O. Management
- Vendor Consolidations
- Import/exports by ocean and air
- Customs Clearances
- Warehousing
- Deliveries
- Distribution
- International Order Fulfillment

We strategically ensure that our customers' needs drive the services around the world.



EURO CARGO EXPRESS GROUP

YOUR BUSINESS IS NOW.

Contact us at [info@eurocargo.com](mailto:info@eurocargo.com)

[www.eurocargo.com](http://www.eurocargo.com)



## EXHIBITING COMPANIES

### WM

#### PROPÉT FOOTWEAR, INC

2415 WEST VALLEY  
HIGHWAY NORTH  
AUBURN, WA 98001  
253.854.7600  
sales@propetusa.com  
jsokso@propetusa.com  
www.propetfootwear.com  
PROPÉT W M

#### Special Sizes

M: Narrow, 14+, Wide

W: Narrow, 12+, Wide

**42<sup>ND</sup> FLOOR 4200**

DIRECTORY AD

### W

#### RANGONI AMERICA CORP

6199 CORNERSTONE COURT EAST,  
SUITE 106  
San Diego, CA 92121  
858.404.0043  
rangoni6@sbcglobal.net  
www.rangonishoes.com  
AMALFI BY RANGONI W  
VALENTINA RANGONI W

#### Special Sizes

W: Narrow, 12+, -5, Wide

**41<sup>ST</sup> FLOOR 4104**

### W

#### ROCKET DOG

TOP PICK GLOBAL INC  
50 WEST 57<sup>TH</sup> STREET, 8<sup>TH</sup> FLOOR  
(BETWEEN 5<sup>TH</sup> & 6<sup>TH</sup> AVES)  
New York, NY 10019  
NEW YORK SHOWROOM  
Call for appointment  
214.537.4247  
510.862.2503  
DIRECTORY AD

### W

#### SANCTUARY / HIGHLINE UNITED LLC

990 WASHINGTON STREET,  
SUITE 215  
DEDHAM, MA 02026  
516.805.9781  
edepaul@highlineunited.us  
www.highlineunited.com  
SANCTUARY W  
www.sanctuaryclothing.com

**41<sup>ST</sup> FLOOR 4115**

### WA

#### SASHA HANDBAGS

10 WEST 33<sup>RD</sup> STREET, SUITE 620  
New York, NY 10001  
212.268.4000  
Shirley@sashabags.com  
www.sashabags.com  
AÉROPOSTALE A  
BABY PHAT W  
BETTY BOOP W  
BEVERLY HILLS POLO CLUB W  
ISAAC MIZRAHI A  
SASHA W A

**41<sup>ST</sup> FLOOR 4116**

#### SAVITRANSPORT SPA

VIA TEVERE 2-12,  
50019 SESTO FIORENTINO  
ITALY  
718.656.9670  
claudia.bertorelli@  
savitransport.it  
www.savitransport.it  
DIRECTORY AD

### W

#### STUDIO MIHARA SL

CALLE LEPANTO, 20-ALTOS  
ELDA, ALICANTE 03600  
SPAIN  
+34 96 698 0415  
Press@chiemihara.com  
www.chiemihara.com  
CHIE MIHARA W  
www.chiemihara.com

**40<sup>TH</sup> FLOOR 4007**

DIRECTORY AD

### W

#### TOP PICK GLOBAL INC

50 WEST 57<sup>TH</sup> STREET, 8<sup>TH</sup> FLOOR  
(BETWEEN 5<sup>TH</sup> & 6<sup>TH</sup> AVES)  
New York, NY 10019  
214.537.4247  
510.862.2503  
lhitch@toppickglobal.com  
ntaylor@toppickglobal.com  
KELSI DAGGER BROOKLYN W  
www.kelsidaggerbk.com  
ROCKET DOG W  
www.rocketdog.com

#### Special Sizes

W: Narrow, Wide

NEW YORK SHOWROOM

Call for appointment

DIRECTORY AD

# FFANY

TOP PICK GLOBAL

NEW YORK LOS ANGELES LONDON

KELSI DΔGGER  
BROOKLYN

ROCKET DOG 

50 WEST 57TH STREET, 8TH FLOOR NYC 10019 | ph. 214-537-4247  
LHitch@Toppickglobal.com



**YOU are NST....**a traveling sales rep seeking opportunities to network with fellow members, vendors and key players in the footwear industry?

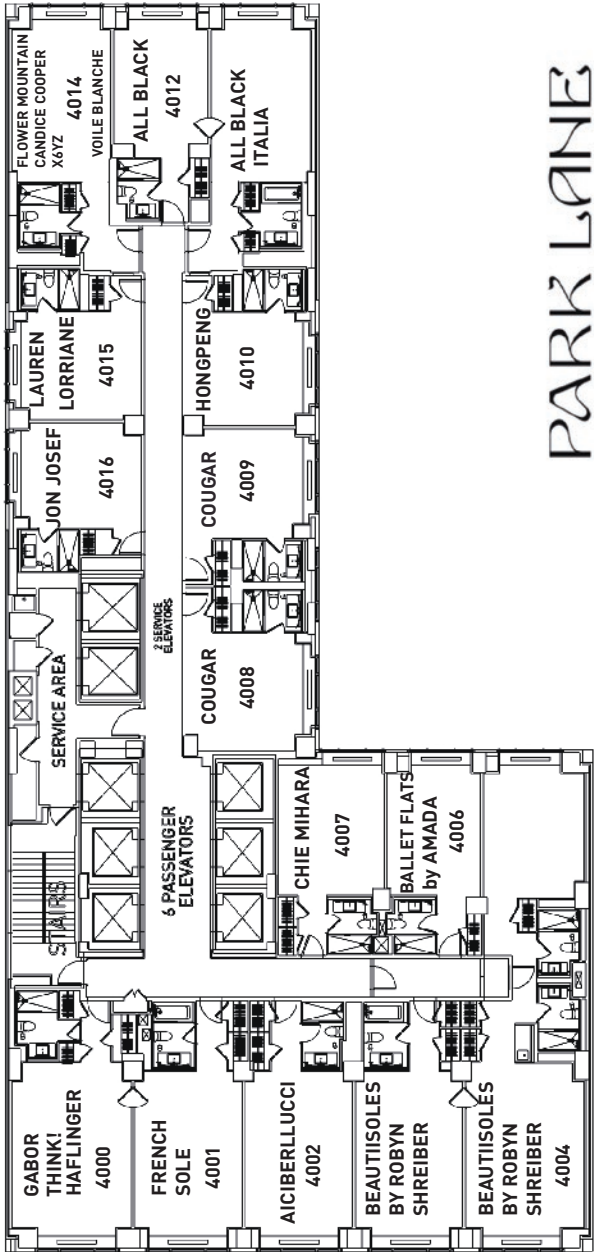
Are you looking for the latest industry information with an organization that supports its members with a range of benefits and services and education? **NST is for you.**

Please checkout **[www.mynst.org](http://www.mynst.org)** for all the benefits or contact Terry Bastis 503-781-1096

40TH FLOOR EXHIBITORS

**AFS NYE**  
FOOTWEAR SHOW NEW YORK EXPO

**40TH FLOOR**



**PARK LANE**

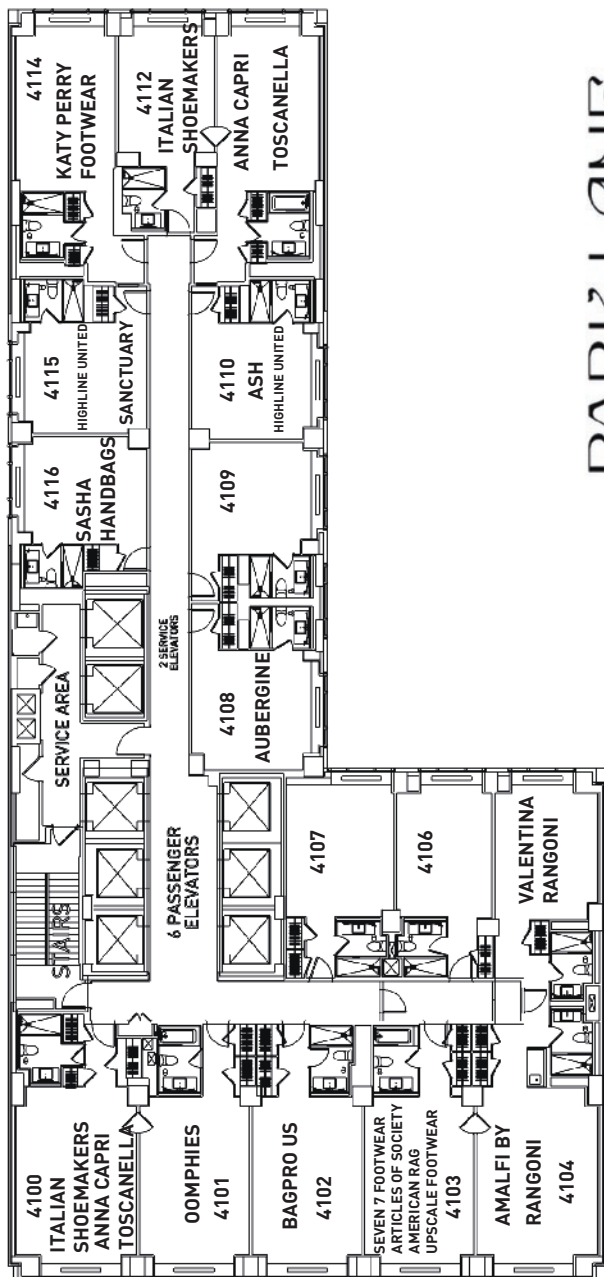
36 CENTRAL PARK SOUTH  
NEW YORK NY 10019



## 41<sup>ST</sup> FLOOR EXHIBITORS

**AFS NYE**  
FOOTWEAR SHOW NEW YORK EXPO

### 41<sup>ST</sup> FLOOR



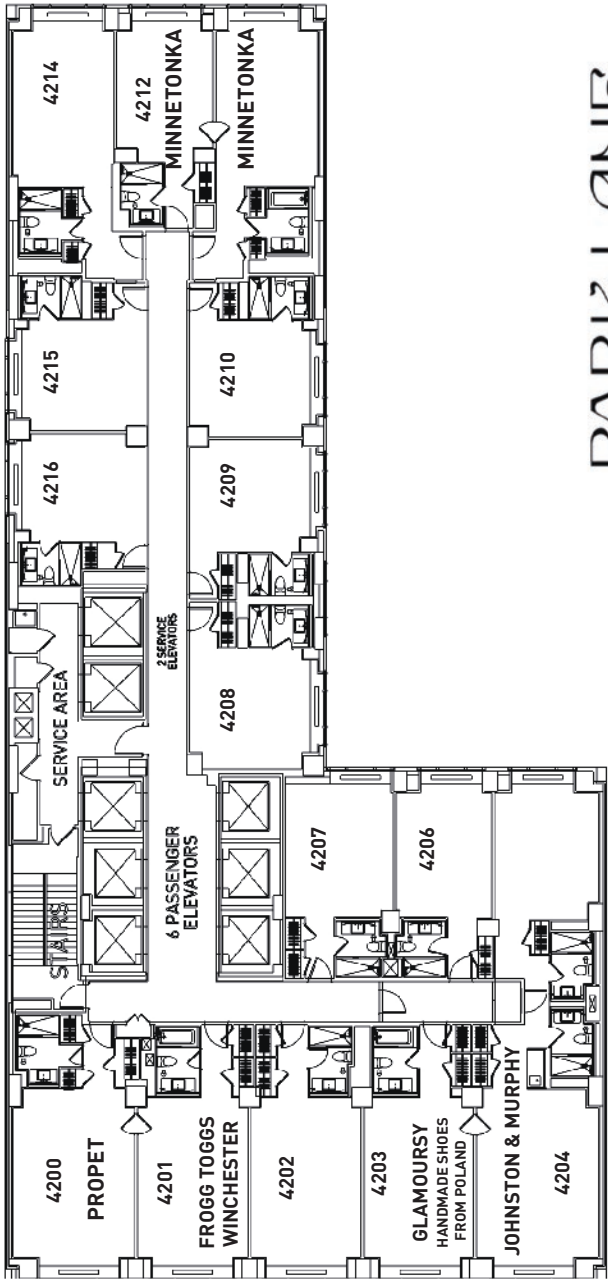
PARK LANE

36 CENTRAL PARK SOUTH  
NEW YORK NY 10019

42<sup>ND</sup> FLOOR EXHIBITORS

**AFS NYE**  
FOOTWEAR SHOW NEW YORK EXPO

42<sup>ND</sup> FLOOR



PARK LANE

36 CENTRAL PARK SOUTH  
NEW YORK NY 10019

Footwear designed  
for a mindful life.

# ponto



Recycled and Bio-Based Materials,  
Lightweight and Water Repellant.



Seasonal Styles | Unisex Silhouettes  
Half and Full Sizes | Multi-platform Marketing Support

For appointments, please call 442.866.9173  
or email [henrik@pontofootwear.com](mailto:henrik@pontofootwear.com)

HENRIK BOM | SALES DIRECTOR



Scan the QR for brand info  
[pontofootwear.com](http://pontofootwear.com) | [@ponto\\_footwear](https://www.instagram.com/ponto_footwear)

## EXHIBITING BRANDS

WMCA	BRAND	COMPANY	FLOOR	ROOM
A	AÉROPOSTALE	SASHA HANDBAGS	41 <sup>ST</sup> FLOOR	4116
W	AICIBERLUCCI	AICIBERLUCCI INC	40 <sup>TH</sup> FLOOR	4002
W	ALL BLACK	ALL BLACK	40 <sup>TH</sup> FLOOR	4012
A	ALL BLACK HANDBAGS	ALL BLACK	40 <sup>TH</sup> FLOOR	4012
W	ALL BLACK ITALIA	ALL BLACK	40 <sup>TH</sup> FLOOR	4012
W	AMALFI BY RANGONI	RANGONI AMERICA CORP	41 <sup>ST</sup> FLOOR	4104
W	AMERICAN RAG	GREDALE LLC	41 <sup>ST</sup> FLOOR	4103
W	ANNA CAPRI	ITALIAN SHOEMAKERS INC	41 <sup>ST</sup> FLOOR	4100, 4112
W	ARTICLES OF SOCIETY	GREDALE LLC	41 <sup>ST</sup> FLOOR	4103
WM	ASH	ASH (HIGHLINE UNITED LLC)	41 <sup>ST</sup> FLOOR	4110
WA	AUBERGINE	AUBERGINE / CARMEL BY D3SIGN LLC	41 <sup>ST</sup> FLOOR	4108
W	BABY PHAT	SASHA HANDBAGS	41 <sup>ST</sup> FLOOR	
A	BAG PRO	BUSINESS IN MOTION INC	41 <sup>ST</sup> FLOOR	4102
W	BALLET FLATS BY AMADA	AMADA MADE BY HAND LLC	40 <sup>TH</sup> FLOOR	4006
W	BEAUTIISOLES BY ROBYN SHREIBER	BEAUTIISOLES BY ROBYN SHREIBER	40 <sup>TH</sup> FLOOR	4004
W	BETTY BOOP	SASHA HANDBAGS	41 <sup>ST</sup> FLOOR	4116
W	BEVERLY HILLS POLO CLUB	SASHA HANDBAGS	41 <sup>ST</sup> FLOOR	4116
WM	CANDICE COOPER	FALC SPA	40 <sup>TH</sup> FLOOR	4014
W	CARMEL BY D3SIGN	AUBERGINE / CARMEL BY D3SIGN LLC	41 <sup>ST</sup> FLOOR	4108
W	CHIE MIHARA	STUDIO MIHARA SL	40 <sup>TH</sup> FLOOR	4007
W	COUGAR	COUGAR SHOES	40 <sup>TH</sup> FLOOR	4008, 4009
WM	FLOWER MOUNTAIN	FALC SPA	40 <sup>TH</sup> FLOOR	4014
W	FRENCH SOLE	FRENCH SOLE	40 <sup>TH</sup> FLOOR	4001
WMCA	FROGG TOGGS	FROGG TOGGS	42 <sup>ND</sup> FLOOR	4201
WM	GABOR	KANNER CORPORATION	40 <sup>TH</sup> FLOOR	4000
WA	GLAMOURS	GLAMOURS	42 <sup>ND</sup> FLOOR	4203
WM	HAFLINGER	KANNER CORPORATION	40 <sup>TH</sup> FLOOR	4000
WMA	HONGPENG	HONGPENG	40 <sup>TH</sup> FLOOR	4010
A	ISAAC MIZRAHI	SASHA HANDBAGS	41 <sup>ST</sup> FLOOR	4116

## EXHIBITING BRANDS

WMCA	BRAND	COMPANY	FLOOR	ROOM
W	ITALIAN SHOEMAKERS	ITALIAN SHOEMAKERS INC	41 <sup>ST</sup> FLOOR	4100, 4112
M	JOHNSTON & MURPHY	JOHNSTON & MURPHY	42 <sup>ND</sup> FLOOR	4204
M	JOHNSTON & MURPHY COLLECTION	JOHNSTON & MURPHY	42 <sup>ND</sup> FLOOR	4204
W	JON JOSEF	JON JOSEF (P & M FOOTWEAR LLC)	40 <sup>TH</sup> FLOOR	4016
WCA	JUST 4 FUN	AUBERGINE / CARMEL BY D3SIGN LLC	41 <sup>ST</sup> FLOOR	4108
W	KATY PERRY FOOTWEAR	KATY PERRY FOOTWEAR	41 <sup>ST</sup> FLOOR	4114
W	KELSI DAGGER BROOKLYN	TOP PICK GLOBAL INC		NEW YORK SHOWROOM
W	LAUREN LORRAINE	LAUREN LORRAINE	40 <sup>TH</sup> FLOOR	
W	MIA SHOES	MIA SHOES, INC		NEW YORK SHOWROOM
WMCA	MINNETONKA	MINNETONKA	42 <sup>ND</sup> FLOOR	4212
W	NICKY HILTON X FRENCH SOLE	FRENCH SOLE	40 <sup>TH</sup> FLOOR	4001
C	OOMPHIES	OOMPHIES	41 <sup>ST</sup> FLOOR	4101
WM	PROPÉT	PROPÉT FOOTWEAR, INC	42 <sup>ND</sup> FLOOR	4200
W	ROCKET DOG	TOP PICK GLOBAL INC		NEW YORK SHOWROOM
W	SANCTUARY	SANCTUARY (HIGHLINE UNITED LLC)	41 <sup>ST</sup> FLOOR	4115
WA	SASHA	SASHA HANDBAGS	41 <sup>ST</sup> FLOOR	4116
W	SEVEN 7 FOOTWEAR	GREDALE LLC	41 <sup>ST</sup> FLOOR	4103
W	STORM BY COUGAR	COUGAR SHOES	40 <sup>TH</sup> FLOOR	4008, 4009
WM	THINK!	KANNER CORPORATION	40 <sup>TH</sup> FLOOR	4000
W	TOSCANELLA	ITALIAN SHOEMAKERS INC	41 <sup>ST</sup> FLOOR	4100, 4112
WM	UPCYCLE FOOTWEAR	GREDALE LLC	41 <sup>ST</sup> FLOOR	4103
W	VALENTINA RANGONI	RANGONI AMERICA CORP	41 <sup>ST</sup> FLOOR	4104
WM	VOILE BLANCHE	FALC SPA	40 <sup>TH</sup> FLOOR	4014
WM	W6YZ	FALC SPA	40 <sup>TH</sup> FLOOR	4014
WMC	WINCHESTER	FROGG TOGGS	42 <sup>ND</sup> FLOOR	4201





**AciBerlucci**  
New York

Angela Shi

+1 6178880459

E-mail: [aiciberluccishoes@gmail.com](mailto:aiciberluccishoes@gmail.com)

<https://aiciberluccishoes.com>

ROOM # 4002



Ins: [aiciberluccishoes](https://www.instagram.com/aiciberluccishoes)

Ins: [incishoes\\_official](https://www.instagram.com/incishoes_official)

**In Stock**



# Gabor



Customer Service | Patrice Weber  
800.381.3486 | Phone 207.650.9812  
www.gabor.de | patiy\_weber@me.com

KANNER  
CORPORATION

customer@kanner.com

ROOM  
#4000

AFS NYE  
FOOTWEAR SHOW NEW YORK EXPO



*"A woman with good shoes is never ugly".*

*Coco Chanel*



**SAVITRANSPORT**

GLOBAL LOGISTICS

[www.savitransport.com](http://www.savitransport.com)